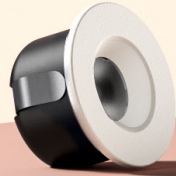
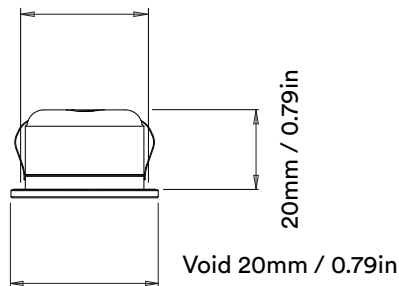


erluna

mite origin natural



Cut-out
31mm / 1.22in



Bezel - 36mm / 1.42in
Aperture - 18.6mm / 0.73in



mite origin natural

orluna

		2700K	
		SOFT	
LIGHT VALUES		Wide	Flood
	Beam Width FWHM	43°	50°
	Initial Lumens	104	104
	Engine Lumens	N/A	N/A
	Luminaire Lumens	70	68
	Luminaire Lm/W	70	68
Luminaire Cd	92	77	
POWER	Voltage	9V	
	Drive Current	120mA	
	Circuit Power (typ)	1W	

		3000K	
		SOFT	
LIGHT VALUES		Wide	Flood
	Beam Width FWHM	43°	50°
	Initial Lumens	111	111
	Engine Lumens	N/A	N/A
	Luminaire Lumens	72	73
	Lm/W	72	73
Luminaire Cd	93	78	
POWER	Voltage	9V	
	Drive Current	120mA	
	Circuit Power (typ)	1W	

Binning SDCM (Hot)	3	
CRI (typ)(R9)	98 (99)	
TM30 Rf Rg	Rf 97.7 Rg 100.4	
Lifetime (TM21)	L90 B5 50,000hrs (inc driver)	
Lifetime (Calculated)	L70 120,000hrs	
DRIVER	Protocols	Mains Dim / DALI / 0-10V / Non-dim
	Dim to Dark	0.1% Lux
	Distance from LED	20m / 65' (series wiring)
	Emergency	N/A

NUMBER OF LIGHTS PER DRIVER

Protocols	Code	No of lights per driver
DALI	D - 120	1 - 4
0-10	O - 120	1-4
Mains <1% Dimming	M - 120	2 only
Mains >3% Dimming	M - 120	3-4

SPECIFICATION CODE

Engine type	Bezel	Colour Temp	Driver	Beam Width	Bezel Colour	Baffle Colour	Options
NL	- MT	- 27	X	W	- W	- X	- 54 Z
		27 / 2700K 30 / 3000K *40 / 4000K	X / No Driver	W / Wide F / Flood	W / White 9010*1 D / White 9003*2 A / Black anodised*2 G / Polished Brass*2 J / Antique Bronze*2 K / Brushed Chrome*2 L / Polished Chrome*2 F / Satin grey*2 P / Brushed Brass*2 Z / Other Metallic*2 C / Other RAL*2	No Baffle	54 / IP54 Z / LSZH Cable C / 10m Cable - 300mm standard
		*NOTE: increase 3000k by 7%			*1 - standard, in stock *2 - premium, non-stock		