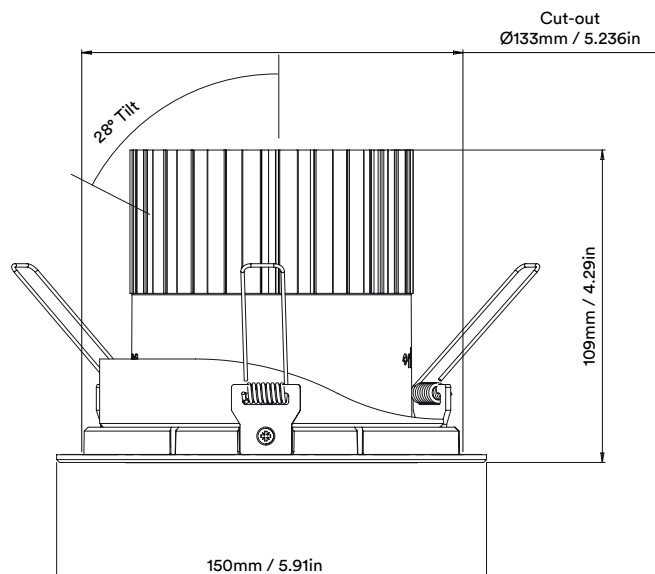
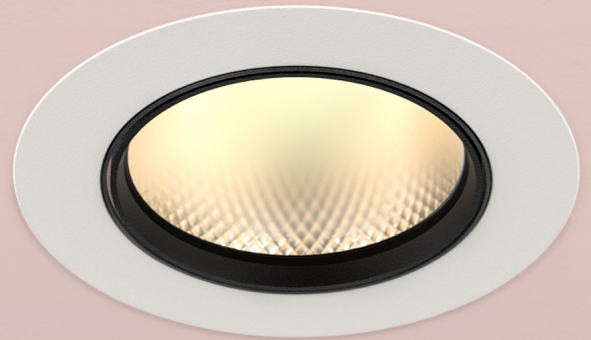


orluna

# arello adjustable origin



# arello adjustable origin



		2700K		
		SOFT		
LIGHT VALUES		Medium	Wide	Flood
	Beam Width FWHM	24°	39°	63°
	Initial Lumens	2344	2344	2344
	Engine Lumens	1993	2063	2038
	Luminaire Lumens	1968	1924	1908
	Engine Lm/W	80	83	82
	Luminaire Cd	5525	3180	1897
POWER	Voltage	33.1V		
	Drive Current	700mA		
	Circuit Power (typ)	24.8W		

		3000K		
		SOFT		
LIGHT VALUES		Medium	Wide	Flood
	Beam Width FWHM	23°	36°	61°
	Initial Lumens	2508	2508	2508
	Engine Lumens	2130	2205	2178
	Luminaire Lumens	2025	2090	2039
	Engine Lm/W	86	89	88
	Luminaire Cd	5855	3763	2174
POWER	Voltage	33.1V		
	Drive Current	700mA		
	Circuit Power (typ)	24.8W		

Binning SDCM (Hot)	2	
CRI (typ)(R9)	98 (99)	
TM30 Rf Rg	Rf 95.9 Rg 100.5	
Lifetime (TM21)	L90 B5 50,000hrs (inc driver)	
Lifetime (L70)	L70 >50,000hrs	
DRIVER	Protocols	Mains Dim / DALI / 0-10V / Non-dim
	Dim to Dark	0.1% Lux
	Distance from LED	20m / 65' (series wiring)
	Emergency	Emergency packs available

## SPECIFICATION CODE

Engine type	Bezel	Colour Temp	Driver	Beam Width	Bezel Colour	Baffle Colour	Options
<b>OR</b>	<b>-ALO-</b>	<b>27</b>	<b>M</b>	<b>M</b>	<b>-W-</b>	<b>BB</b>	<b>F 54 E</b>
		27 / 2700K 30 / 3000K 40 / 4000K	M / Mains Dim D / DALI 0 / 0-10v N / Non Dim X / No Driver	M / Medium W / Wide F / Flood	W / White RAL 9010 D / White RAL 9003 E / White RAL 9016 B / Black RAL 9005 C / Other RAL	BB / Black 9005 WB / White 9010 DB / White 9003 EB / White 9016 CB / Other RAL	F / 60 min Fire Rated Hood 54 / IP54 E / 3hr Emergency N / Frosted Lens Z / LSZH Cable K / Click Connector

\*NOTE: clear glass lens as standard. Soft beams can be achieved with adding frosted lens

